

The RRURBAN Effect

MARCOS PARGA
Syracuse University

WHAT TYPE OF HOME DO WE DESERVE?

Many urbanites would think that it is not too much to ask the new residential architectures to give us the possibility of living in the city with all its density and effervescence, while enjoying some of the advantages of the rural environment. However, our everyday reality invariably shows us the opposite, and that's why we decided to open up the design process to indeterminacy and participation. The goal is to develop a protocol of action with the aim of replacing the unifying trend of urbanization by operations that exploit diversity and contact with nature.

The RRURBAN replicable strategy (Really RURAL and URBAN) is based on some of the conclusions of a research process that aims to reflect through architecture on a new way of understanding community life in our cities. It can be seen as a possible way to inoculate the benefits of single-family housing in the speculative DNA of collective housing, activating moreover issues related to participatory design.

We came soon to the conclusion that to achieve that kind of hybrid, our strategy should combine two actions on the urban housing typology: hollow out and customize. The former to generate spaces of opportunity (non predefined use) for the final users, and the latter to be able to increase the value of each house and thus compensate economically the decrease of built area. From this point, everything was easier: we must only substitute the unifying tendency of urban construction with operations that exploit diversity. We would then come back to a certain degree of personalization that in turn creates identity and redefines our way of living together.

Besides, this path allows us to explore the limits of participation as already made by John Habraken with his theories about the "open-building" or Frei Otto with his "Ökohaus" many years ago. Recovering the essence of those experiences, in the RRURBAN project we try to work with basic volumes in order to allow each housing unit to be easily adapted by the final users according to

their preferences. A realistic "Catalog of wishes" will determine the elementary characteristics of each "urban plot", which will be completely defined when occupying its final position within the general structure.

The result is an inspiring as well as unusual collage of elements, a composition based on fragments representing the collectivity. Faced with the traditional neutral envelopes that give a unique and uniform image of the whole, in this case we can affirm that the facade is a sum of individualities and identities, a form of expression of the desires, aspirations and activity of each inhabitants, exactly what we were looking for.

The first on-going RRURBAN operation will take place in the center of Madrid, occupying a small plot of 4.144,11 sf, enough to house 7 urban plots, all of them with private outdoor space (patio or terrace) and basement parking space.

The common areas (25%) provide the community with a playground, a productive greenhouse, space for barbecues, storage room and bicycle parking.

The RRURBAN Effect

Real RURAL and URBAN environment

What type of home do we deserve?

Many urbanites would think that it is not too much to ask the new residential architecture to give us the possibility of living in the city with all its density and effectiveness, while enjoying some of the advantages of the rural environment. However, our everyday reality inevitably shows us the opposite, and that's why we decided to open up the design process to indeterminacy and participation. The goal is to develop a protocol of action with the aim of replacing the unifying trend of urbanization by operations that exploit diversity and contact with nature.

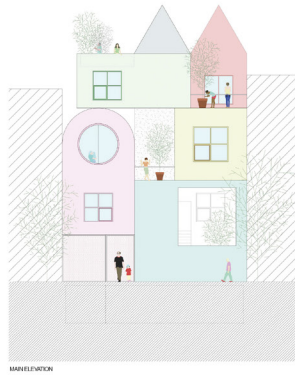
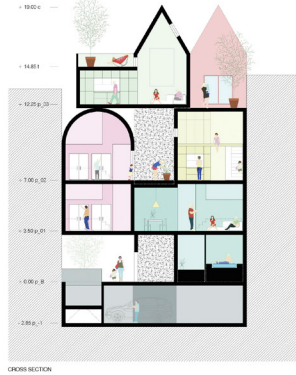
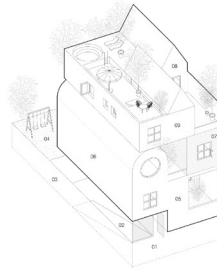
The RRURBAN strategy (Really RURAL and URBAN) is based on some of the conclusions of a research process that aims to reflect through architecture on a new way of understanding community life in our cities. The strategy can be seen as a possible way to inoculate the benefits of single-family housing in the speculative DNA of collective housing, moreover activating issues related to participatory design.

We came soon to the conclusion that to achieve that kind of hybrid, our strategy should combine two actions on the urban housing typology: hollow out and customize. The former to generate spaces of opportunity (non predefined uses) for the final users, and the latter to be able to increase the value of each house and thus compensate economically the decrease of built area. From this point, everything was easier: we must only substitute the unifying tendency of urban construction with operations that exploit diversity. We would then come back to a certain degree of personalization that in turn creates identity and redifies our way of living together.

Besides, this path allows us to explore the limits of participation as already made by John Habraken with his theories about the "open-building" or Frei Otto with the "Cockhouse" many years ago. Recovering the essence of those experiences, in the RRURBAN project we try to work with basic volumes in order to allow each housing unit to be easily adapted by the final users according to their preferences. A realistic "Catalog of wishes" will determine the elementary characteristics of each "urban plot" which will be completely defined when occupying its final position within the general structure.

The result is an inspiring as well as unusual collage of elements, a composition based on fragments representing the collectivity. Faced with the traditional neutral envelopes that give a unique and uniform image of the whole, in this case we can affirm that the facade is a sum of individualities and identities, a form of expression of the desires, aspirations and activity of each inhabitant, exactly what we were looking for. The first RRURBAN operation will take place in the center of Madrid, occupying a small plot of 4.144,11 m² (985 m²), enough to house 7 urban plots, all of them with private outdoor space (patio or terrace) and basement parking space.

The common areas (25%) provide the community with a playground, a productive greenhouse, space for barbecues, storage room and bicycle parking.



RRURBAN #01
 Madrid
 January 2017

Project Data:

City	Madrid
Site area	4.144,11 m ² (985,00 m ²)
Dwelling Units	7
Occupancy	2.830,01 m ² (263,00 m ²)
Total floor area	14.831,28 m ² (1.550,00 m ²)
Private patios/terraces	3.724,31 m ² (346 m ²)
Common Productive Greenhouse	150,70 m ² (14 m ²)
Parking Lots	8 (1 disabled)
Bike Parking Lots	10
Status	On-going

